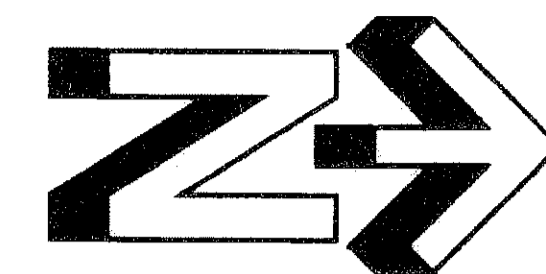


# REPLAT OF ANTHONY GROVES PLAZA, REPLAT

BEING A REPLAT OF LOTS 1 THROUGH 4, ANTHONY GROVES PLAZA, RECORDED IN PLAT BOOK 108, PAGES 133 THROUGH 136, VILLAGE OF ROYAL PALM BEACH, PALM BEACH COUNTY, FLORIDA  
MARCH, 2007

68



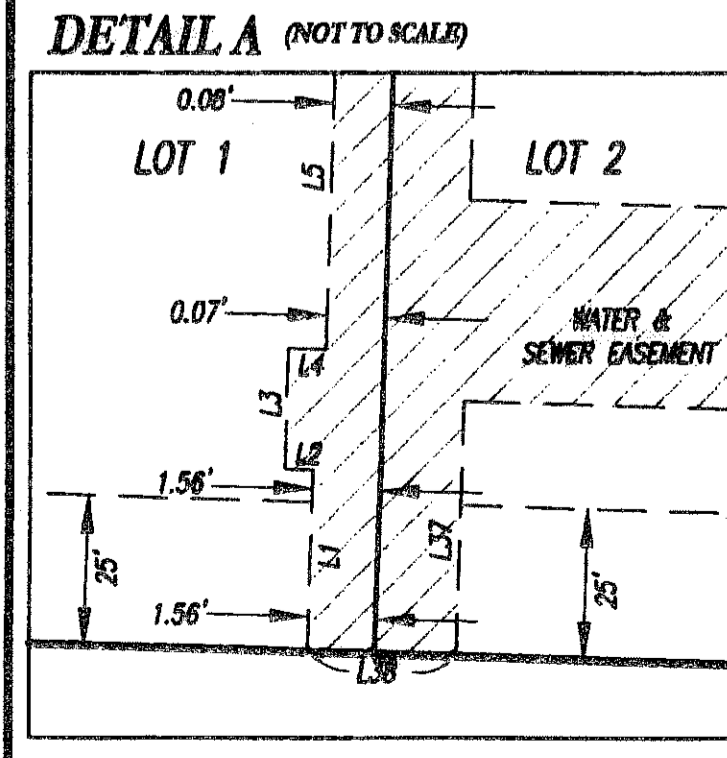
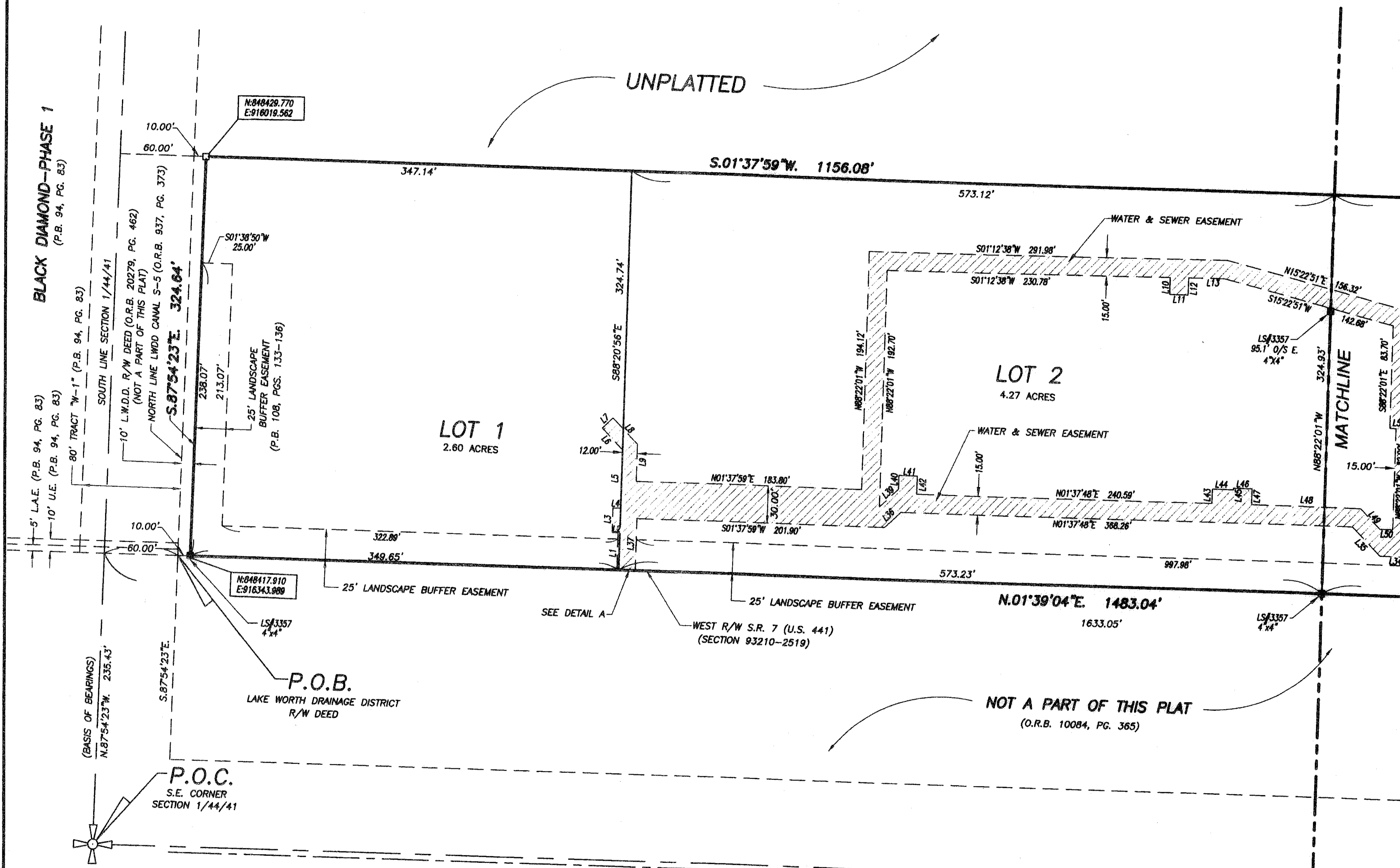
SHEET 4 OF 5

ABBREVIATIONS AND SYMBOLS

1. = Denotes Set Permanent Reference Monuments (P.R.M.'s), Stamped P.R.M. L.S. # 3357.
2. = Denotes Found Permanent Reference Monuments (P.R.M.'s), Stamped P.R.M. L.S. # 3357.
3. = Centerline.
4. R/W = Right of Way
5. P.B. = Plat Book.
6. P.G.(S) = Pages.
7. SEC. = Section.
8. TW.P. = Township.
9. RGE. = Range.
10. U.E. = Utility Easement.
11. D.E. = Drainage Easement.
12. D.B. = Deed Book.
13. A = Arc Length.
14. Δ = Central Angle.
15. R = Radius.
16. C.B. = Chord Bearing.
17. O.R.B. = Official Record Book.
18. R.P.B. = Road Plat Book.
19. L.A.E. = Limited Access Easement.
20. P.O.C. = Point of Commencement.
21. P.O.B. = Point of Beginning.
22. P.B.C. = Palm Beach County.
23. F.N.D. = Found.
24. ESM'T = Easement
25. W'tly = Westerly
26. F.P.L. = Florida Power and Light
27. S.S.E. = Safe Sight Easement
28. N = Northing
29. E = Easting
30. S = Survey
31. D = Deed
32. W.C. = Witness corner

NOTES:

1. Coordinates shown are grid.
2. Datum = NAD 83, 1990 adjusted.
3. Zone = Florida East
4. Linear Unit = US foot
5. Coordinate system 1983 State Plane Transverse Mercator Projection
6. All distances are ground.
7. Scale factor = 1.00001893
8. Ground distance x scale factor = grid distance
9. Bearings shown hereon are based on the South line of said Section 1 which is assumed to bear North 87°54'23" West and all other bearings are relative thereto.
10. No building or any kind of construction, trees or shrubs shall be placed on any easement without prior written consent of all easement beneficiaries and all applicable village approvals or permits as required for such encroachments.
11. This plat, as recorded in its graphic form, is the official depiction of the subdivided lands described herein and will in no circumstances be supplanted in authority by any other graphic or digital form of the plat, whether graphic or digital. There may be additional restrictions that are not recorded on this plat that may be found in the public records of this county.
12. This instrument prepared by: Kristi J. Smith  
Wallace Surveying Corporation  
5553 Village Boulevard  
West Palm Beach, FL 33407  
561/640-4551



LINE TABLE

LINE	BEARING	DISTANCE	LINE	BEARING	DISTANCE
L1	S 88°22'01" E	30.04'	L26	S 01°37'59" W	24.62'
L2	N 01°37'59" E	4.87'	L27	N 01°37'59" E	24.88'
L3	N 88°21'02" W	20.00'	L28	N 01°37'59" E	28.42'
L4	S 01°37'59" W	4.17'	L29	N 88°22'01" E	24.62'
L5	N 88°22'01" W	47.26'	L30	S 88°22'01" E	24.62'
L6	S 46°42'02" W	24.14'	L31	N 01°37'59" E	11.82'
L7	S 43°22'01" E	12.00'	L32	N 88°22'01" W	14.07'
L8	S 46°37'59" W	29.00'	L33	N 01°37'59" E	7.88'
L9	N 88°22'01" W	30.18'	L34	S 01°37'59" W	24.88'
L10	N 88°21'00" W	13.83'	L35	N 01°37'59" E	32.88'
L11	S 01°37'59" W	15.00'	L36	S 42°58'07" E	18.18'
L12	S 88°21'00" E	14.04'	L37	N 88°22'01" W	48.18'
L13	S 01°17'59" W	28.49'	L38	N 01°39'04" E	18.05'
L14	N 88°22'01" W	10.21'	L39	N 42°58'07" W	21.10'
L15	S 01°37'59" W	106.19'	L40	N 88°22'01" W	11.82'
L16	N 87°54'23" W	106.19'	L41	S 01°37'59" W	15.00'
L17	N 01°37'59" E	108.10'	L42	N 88°22'01" W	14.84'
L18	S 01°37'59" W	107.89'	L43	N 88°22'01" W	11.65'
L19	N 87°54'23" W	11.82'	L44	S 01°37'59" W	17.22'
L20	S 01°37'59" W	86.79'	L45	N 88°22'01" W	1.50'
L21	S 88°19'59" E	5.83'	L46	S 01°37'59" W	15.00'
L22	S 01°37'59" W	28.44'	L47	S 88°21'02" E	12.89'
L23	N 01°37'59" E	15.12'	L48	N 01°37'59" E	68.10'
L24	S 88°21'28" E	12.80'	L49	S 88°17'53" W	22.83'
L25	S 01°37'59" W	23.44'	L50	N 01°39'51" E	10.56'
			L51	N 01°37'59" E	4.80'

☉ S.R. No.7 (U.S. 441) (PUBLIC)

REPLAT OF ANTHONY GROVES PLAZA, REPLAT

WALLACE SURVEYING CORPORATION  
CORP. LICENSE NUMBER 7-408  
888 VILLAGE BOULEVARD, WEST PALM BEACH, FLORIDA 33407 • (561) 640-4551

FIELD:	JOB NO.: 04-1396H	P.L.A.:	PL.
OFFICE:	K.S.	DATE:	MARCH, 2007
CYD:	C.W.	REP:	04-1396-9.DWG
		DWG. NO.:	04-1396-9
		SHEET:	4 OF 5